

MONTHLY MEMBERSHIP PROGRESS REPORT

LOCATION INDIA

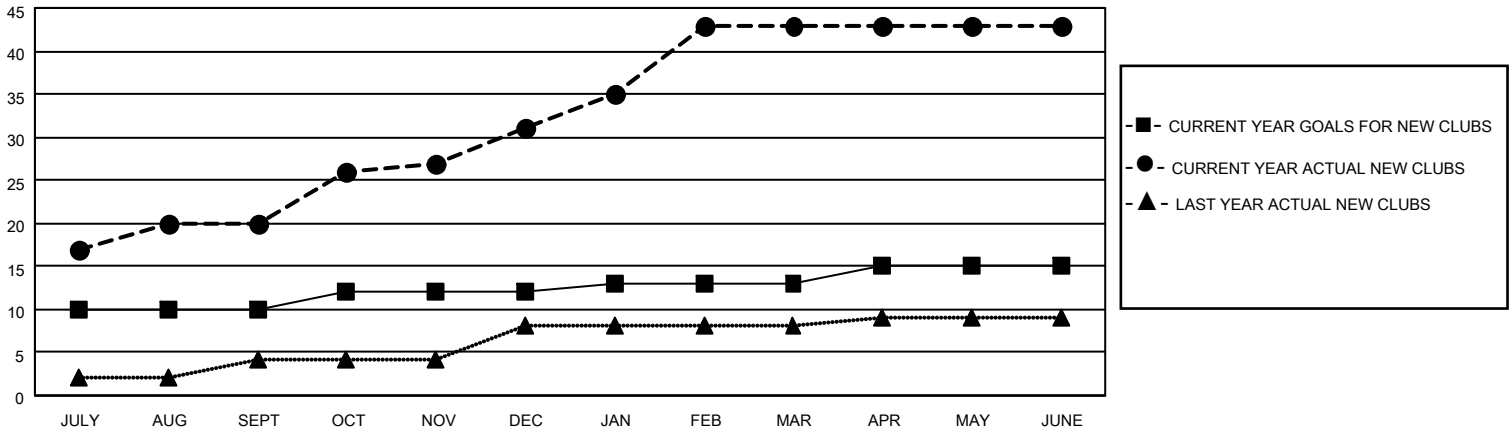
District 320 B

Results as of: 6/30/2022

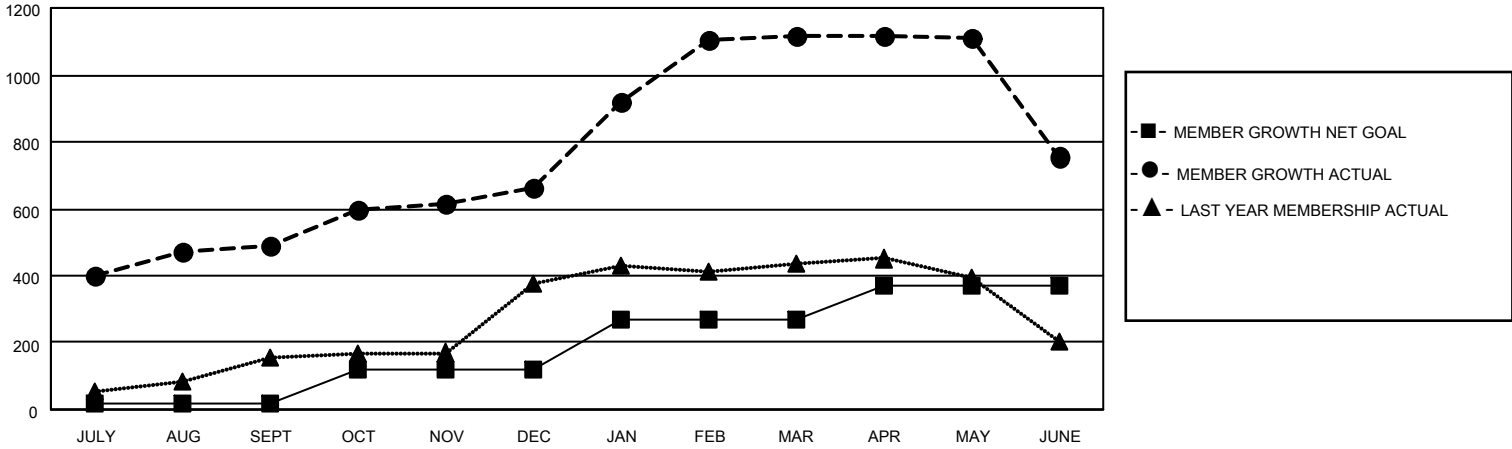
Clubs			
RESULTS FOR 2021-2022			
QUARTER	NEW CLUB GOAL	NEW CLUBS	DROPPED CLUBS
JULY/AUG/SEPT	10	20	2
OCT/NOV/DEC	2	11	0
JAN/FEB/MAR	1	12	0
APR/MAY/JUNE	2	0	6

Members			
RESULTS FOR 2021-2022			
QUARTER	MEMBER GROWTH NET GOAL	MEMBER GROWTH ACTUAL	DROPPED MEMBERS ACTUAL (including transfers)
JULY/AUG/SEPT	20	545	43
OCT/NOV/DEC	100	260	86
JAN/FEB/MAR	150	509	34
APR/MAY/JUNE	100	213	554

GOALS AND ACTUAL NEW CLUBS CUMULATIVE



GOALS AND ACTUAL MEMBERS CUMULATIVE



DROPPED CLUBS: 8

84 CLUBS OF 107 ADDED 1 OR MORE NEW MEMBERS

GENDER DISTRIBUTION

MALE	1,761 (61.04%)
FEMALE	1,124 (38.96%)
NON BINARY	0 (0.00%)
PREFER NOT TO ANSWER	0 (0.00%)

DROPPED MEMBERS

[CLICK HERE FOR CUMULATIVE MEMBERSHIP DATA](#)

DECEASED	13
CLUB CANCELLED	116
OTHER	588
TOTAL	717

TOTAL FAMILY UNIT MEMBERS 1,963

FAMILY MEMBERS PAYING HALF DUES 1,086